

# ///BOARDROOM



*Apparel Design and Manufacturing*



---

## 2019 APPAREL COLLECTION

---

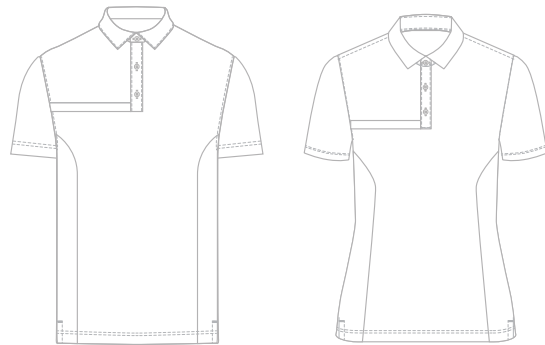
**Custom Clothing**  
**Uniform Collections**  
**Private Label**  
**Global Sourcing**  
**Decoration / Imprint**  
**Inventory Programs**

# How To Order Custom

## 1. Send Artwork



## 2. Select Styles



## 3. We Create Virtuals



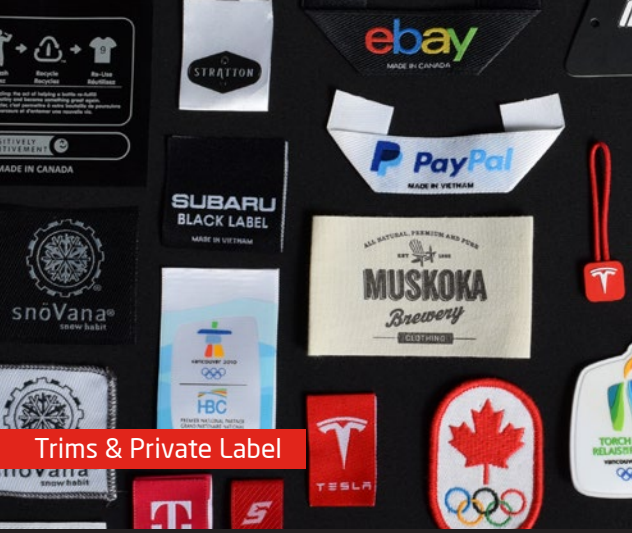
## 4. We Produce Garment



Decoration



Fabric & Color Matching



Trims & Private Label



Domestic & Offshore Factories





## Zealot SS Tee

**Mens:** #630260 **Ladies:** #430235

The Zealot Short Sleeve Tee, features contrast areas in the shoulders and underarm areas. Our performance quick dry, moisture wicking fabric makes this style great for athletic team uniforms.

**DOMESTIC - Regular Price:** \$39.90<sub>A</sub>

**OFFSHORE - Regular Price:** \$25.90<sub>A</sub>



## Zealot LS Tee

**Mens:** #630261 **Ladies:** #430236

The Zealot Long Sleeve Tee, features contrast areas in the shoulders and underarm areas. Our performance quick dry, moisture wicking fabric makes this style great for athletic team uniforms.

**DOMESTIC - Regular Price:** \$45.90<sub>A</sub>

**OFFSHORE - Regular Price:** \$29.90<sub>A</sub>



## Kato Tee

**Mens:** #630269 **Ladies:** #430244

The Kato Tee is a soccer jersey inspired V neck tee style featuring raglan sleeves with contrast areas on the cuffs. The lightweight polyester fabric makes this style perfect for dye sublimation using any artwork or graphics based on your needs.

**DOMESTIC - Regular Price:** \$39.90<sub>A</sub>

**OFFSHORE - Regular Price:** \$25.90<sub>A</sub>





## FiveB Polo

**Mens:** #610239 **Ladies:** #410202

The FiveB Polo features contrast areas in the collar and placket areas in addition to contrast sleeves, and reflective taping for added visibility. Customize further by using contrast top stitching on this style.

**DOMESTIC - Regular Price:** \$53.90<sub>A</sub>

**OFFSHORE - Regular Price:** \$34.90<sub>A</sub>



ECO FRIENDLY



QUICK DRY



MOISTURE WICKING



DURABLE



MACHINE WASHABLE

## Seaven Polo

**Mens:** #610242 **Ladies:** #410205

Our Seaven Long Sleeve Polo is a buttoned shirt style with contrast options in the collar, body, and cuff areas. Mix and match color options to create a fun custom polo.

**DOMESTIC - Regular Price:** \$57.90<sub>A</sub>

**OFFSHORE - Regular Price:** \$36.90<sub>A</sub>



ECO FRIENDLY



QUICK DRY



MOISTURE WICKING



DURABLE



LIGHTWEIGHT



MACHINE WASHABLE



## Pit Stop Polo

**Mens:** #610238 **Ladies:** #410201

This racing inspired buttoned polo features a sublimated stripe down the right side. Created using our breathable drytech fabric.

**DOMESTIC - Regular Price:** \$49.90<sub>A</sub>

**OFFSHORE - Regular Price:** \$31.90<sub>A</sub>



ECO FRIENDLY



QUICK DRY



MOISTURE WICKING



DURABLE



MACHINE WASHABLE







## Hokido Zipneck

**Mens:** #630264 **Ladies:** #430239

The Hokido Zipneck is a lightweight performance zipneck featuring a contrast back yoke area that can be dye sublimated with any artwork or graphic you can dream up.

**DOMESTIC** - Regular Price: \$59.90<sub>A</sub>

**OFFSHORE** - Regular Price: \$37.90<sub>A</sub>



ECO FRIENDLY



QUICK DRY



MOISTURE WICKING



DURABLE



MACHINE WASHABLE



## Powell Street Button Down

**Mens:** #620172 **Ladies:** #420123

This short sleeve button down is a companion piece to our Powell Street Jacket and Polo featuring the signature double stripes on the chest.

**DOMESTIC** - Regular Price: \$59.90<sub>A</sub>

**OFFSHORE** - Regular Price: \$39.90<sub>A</sub>



ECO FRIENDLY



MOISTURE WICKING



QUICK DRY



LIGHTWEIGHT



STRETCH



MACHINE WASHABLE

## Ikon Button Down

**Mens:** #620197 **Ladies:** #420121

Our Ikon Long Sleeve Button Down Shirt is a retail inspired, high end shirt with double chest pockets. This style features contrast front yoke and inside cuff areas for custom sublimated logos or graphics.

**DOMESTIC** - Regular Price: \$69.90<sub>A</sub>

**OFFSHORE** - Regular Price: \$49.90<sub>A</sub>



ECO FRIENDLY



MOISTURE WICKING



QUICK DRY



LIGHTWEIGHT



STRETCH



MACHINE WASHABLE



## Melee Jacket

**Mens:** #650454 **Ladies:** #450329

The Melee Jacket is a retail inspired athleisure jacket with a focus on movement and comfort. This style features thumbholes and contrast ribbing along the collar, cuffs, and pocket areas.

**DOMESTIC** - Regular Price: \$89.90<sub>A</sub>

**OFFSHORE** - Regular Price: \$69.90<sub>A</sub>



STRETCH



MACHINE WASHABLE



DURABLE



## Triton Jacket

**Mens:** #650472 **Ladies:** #450349

The Triton Jacket is a lightweight jacket with contrast options in the chest and underarm areas. This jacket features a hide-away hood, slash pockets, and the option to partially or fully sublimates with custom graphics or artwork.

**DOMESTIC** - Regular Price: \$79.90<sub>A</sub>

**OFFSHORE** - Regular Price: \$49.90<sub>A</sub>



ECO FRIENDLY



QUICK DRY



MACHINE WASHABLE

## Budaroo Jacket

**Mens:** #650458 **Ladies:** #450346

The Budaroo Jacket is a retro half zip pullover piece created with our lightweight Microfiber fabric. Featuring color blocked areas for customization, a full kangaroo pocket, and contrast ribbing along the collar and cuffs.

**DOMESTIC** - Regular Price: \$79.90<sub>A</sub>

**OFFSHORE** - Regular Price: \$49.90<sub>A</sub>



ECO FRIENDLY



QUICK DRY



MACHINE WASHABLE







## Leroy Hoodie

**Mens:** #640123 **Ladies:** #440100

The Leroy Hoodie is a classic pullover style, created in our poly cotton blend fleece fabric, this hoodie will keep you warm and comfortable at home or out on the town. Features a front chest contrast area, and kangaroo pockets.

**DOMESTIC** - Regular Price: \$79.90<sub>A</sub>

**OFFSHORE** - Regular Price: \$59.90<sub>A</sub>



ECO FRIENDLY



MACHINE WASHABLE



DURABLE

## Finch Hoodie

**Mens:** #640122 **Ladies:** #440098

The Finch Hoodie is our variant pullover hoodie style. Created in our poly cotton blend fleece fabric, this hoodie will keep you warm and comfortable at home or out on the town. Features a diagonal chest stripe, and kangaroo pockets.

**DOMESTIC** - Regular Price: \$79.90<sub>A</sub>

**OFFSHORE** - Regular Price: \$59.90<sub>A</sub>



ECO FRIENDLY



MACHINE WASHABLE



DURABLE





## Retro-Snap Pullover

**Mens:** #640124 **Ladies:** #440102

Our Retro-Snap Pullover style is a thermal 4 snap button zipneck style featuring contrast areas in the placket and cuff areas along with a zippered chest pocket for added utility.

**DOMESTIC - Regular Price:** \$85.90<sub>A</sub>

**OFFSHORE - Regular Price:** \$65.90<sub>A</sub>



ECO FRIENDLY



MOISTURE WICKING



QUICK DRY



MACHINE WASHABLE



INSULATED

## Marcus Zipneck

**Mens:** #640125 **Ladies:** #440101

The Marcus Zipneck is a sweater fleece half zip style. This pullover style features bonded cuffs and two snap fastened pockets. Contrast areas available in pocket flap and collar trim areas.

**DOMESTIC - Regular Price:** \$85.90<sub>A</sub>

**OFFSHORE - Regular Price:** \$65.90<sub>A</sub>



ECO FRIENDLY



MOISTURE WICKING



QUICK DRY



MACHINE WASHABLE



INSULATED



## Reloaded Hoodie

**Mens:** #640118 **Ladies:** #440099

The Reloaded Hoodie is a thermal fleece hoodie style with ergonomic lines that hug the body. This style features contrast stripes on the body, hood liner, and sleeve areas in addition to ribbed cuff and hem areas for added shape retention.

**DOMESTIC** - Regular Price: \$99.90<sub>A</sub>

**OFFSHORE** - Regular Price: \$69.90<sub>A</sub>



## Gahuna Bomber

**Mens:** #650473 **Ladies:** #450350

This durable bomber jacket style is created using diamond quilted poly-wool fabric, and soft-shell sleeves for weather resistance. Features ribbed cuffs and collars, metal zippers, and standard slash pockets.

**DOMESTIC** - Regular Price: \$99.90<sub>A</sub>

**OFFSHORE** - Regular Price: \$69.90<sub>A</sub>



## Petegan Jacket

**Mens:** #650477 **Ladies:** #450351

A full-zip thermal jacket made with soft, microfleece and sweater fleece. Featuring contrast flatlocking, a front chest zipper, and soft collar treatment.

**DOMESTIC** - Regular Price: \$93.90<sub>A</sub>

**OFFSHORE** - Regular Price: \$65.90<sub>A</sub>





## Sperling Hybrid Jacket

**Mens:** #650439 **Ladies:** #450348

Our Sperling Jacket is a durable new hybrid piece using both soft-shell fabric for weather resistance and our sweater fleece for added warmth. This style features adjustable cuffs, and standard slash pockets.

**DOMESTIC - Regular Price:** \$99.90<sub>A</sub>

**OFFSHORE - Regular Price:** \$79.90<sub>A</sub>



## Icono Jacket

**Mens:** #650482 **Ladies:** #450353

This racing team inspired hard shell jacket features a contrast zipper, and racing stripes along the right side. The durable fabric and construction makes this a great winter work jacket.

**DOMESTIC - Regular Price:** \$99.90<sub>A</sub>

**OFFSHORE - Regular Price:** \$79.90<sub>A</sub>







## Elemental Jacket

**Mens:** #650455 **Ladies:** #450347

This hooded Taslan Shell jacket is perfect for fall or winter weather conditions. Featuring a storm placket for the front zipper, toggled hem and hood, and snap fastened flap pockets.

**DOMESTIC - Regular Price:** \$139.90<sub>A</sub>

**OFFSHORE - Regular Price:** \$99.90<sub>A</sub>



ECO FRIENDLY



WATER RESISTANT



WIND RESISTANT



MACHINE WASHABLE



DURABLE

## Forte Jacket

**Mens:** #650488 **Ladies:** #450359

The Forte Jacket is a durable Taslan Shell jacket with water and wind resistance, and contrast panels in the shoulders, sides, and back. This style also features a tuck away hood.

**DOMESTIC - Regular Price:** \$139.90<sub>A</sub>

**OFFSHORE - Regular Price:** \$99.90<sub>A</sub>



ECO FRIENDLY



WATER RESISTANT



WIND RESISTANT



MACHINE WASHABLE



DURABLE





## Anapurna Vest

**Mens:** #680062 **Ladies:** #480026

The Anapurna Vest is a thermal fleece vest featuring our duratech fleece. Perfect as an extra layer to keep yourself warm. This style features a front chest zippered pocket and two slash pockets as well as a contrast front chest area.

**DOMESTIC** - Regular Price: \$77.90<sub>A</sub>

**OFFSHORE** - Regular Price: \$57.90<sub>A</sub>



## Piccolo Vest

**Mens:** #680063 **Ladies:** #480028

The Piccolo Vest is a durable vest style using diamond quilted poly-wool. This high end design features split kangaroo pockets and a soft neck treatment for added comfortability.

**DOMESTIC** - Regular Price: \$79.90<sub>A</sub>

**OFFSHORE** - Regular Price: \$59.90<sub>A</sub>



## Valent Vest

**Mens:** #680064

Our Valent Vest is inspired by a classic Canadian lumberjack vest, featuring thermal microfleece and soft-shell fabric for enhanced weather resistance and warmth.

**DOMESTIC** - Regular Price: \$73.90<sub>A</sub>

**OFFSHORE** - Regular Price: \$43.90<sub>A</sub>







## Activa Tank Top

Mens: #630267

**DOMESTIC** - Regular Price: \$35.90<sub>A</sub>

**OFFSHORE** - Regular Price: \$24.90<sub>A</sub>



## Boulder Joggers

Mens: #660057

**DOMESTIC** - Regular Price: \$59.90<sub>A</sub>

**OFFSHORE** - Regular Price: \$39.90<sub>A</sub>



## Chakra Sports Bra

Ladies: #490022

This strapped sports bra is ideal for medium to lighter workouts. Offering support and comfort with a breathable back mesh, 4 way stretch moisture wicking fabric, and a custom contrast elastic band.

**DOMESTIC** - Regular Price: \$89.90<sub>A</sub>

**OFFSHORE** - Regular Price: \$69.90<sub>A</sub>

## GCDA Leggings

Ladies: #460049

These form fitted leggings are perfectly suited for yoga or the gym. This style features contrast side panels able to be color blocked or dye sublimated with any artwork or graphic.

**DOMESTIC** - Regular Price: \$89.90<sub>A</sub>

**OFFSHORE** - Regular Price: \$69.90<sub>A</sub>





**Zipper Safety Vest**

**SKU#:** 61120/G

**Colors:** Orange, Green

**Safety Features:** Fully compliant with CSA Z96-15 Class 2, Level 2 and becomes Class 3 when combined with the right model arm and leg bands  
Fully compliant with ANSI/ISEA 107-2015 Type R, Class 2, not FR  
4" Contrasting Vi-brance® tape



**Surveyor Vest**

**SKU#:** 6165R/O/G/BK

**Colors:** Red, Orange, Green, Black

**Safety Features:** Fully compliant with CSA Z96-15 Class 2, Level 2 and becomes Class 3 when combined with the right model arm and leg bands  
Fully compliant with CSA Z96-15 Class 1 Level 2  
Fully compliant with ANSI/ISEA 107-2015 Type R, Class 2, not FR  
Fully compliant with ANSI/ISEA 107-2015 Type O, Class 1, not FR



**Safety Cotton Lined Short Sleeve T-Shirt**

**SKU#:** 60000/G/N

**Colors:** Orange, Green, Navy

**Safety Features:** Fully compliant with CSA Z96-15 Class 2, Level 2 and becomes Class 3 when combined with the right model arm and leg bands  
Fully compliant with CSA Z96-15 Class 1 Level 2  
Fully compliant with ANSI/ISEA 107-2015 Type R, Class 2, not FR  
Fully compliant with ANSI/ISEA 107-2015 Type O, Class 1, not FR



**Safety Cotton Lined Long Sleeve Shirt**

**SKU#:** 60150/G/N

**Colors:** Orange, Green, Navy

**Safety Features:** Fully compliant with CSA Z96-15 Class 2, Level 2 and becomes Class 3 in combination with the right model leg bands  
Fully compliant with CSA Z96-15 Class 1 Level 2  
Fully compliant with ANSI/ISEA 107-2015 Type R, Class 3, not FR  
Fully compliant with ANSI/ISEA 107-2015 Type O, Class 1, not FR

**Viking 3-in-1 Tri-Zone Jacket Style**

**Custom Viking Outerwear**







## Viking Ascent Jacket Style

- Key Features:**
- Custom made design
  - High-tech polyester/PVC shell fabric
  - 100% waterproof and windproof
  - Waterproof seam sealed
  - Adjustable cuffs
  - Adjustable tuck away hood
  - 4 storage pockets and 1 sleeve pocket



## Viking 3-in-1 Tri-Zone Jacket Style

- Key Features:**
- Custom made design
  - High-tech Trilobal polyester/PVC shell
  - 100% waterproof and windproof
  - Waterproof seam sealed
  - Safety reflective piping
  - Side zippers on outer, and inner jackets
  - Hook-and-loop fasteners on inner flap
  - Detachable hood



## Viking Torrent Jacket Style

- Key Features:**
- Custom made design
  - High-tech polyester/PVC shell fabric
  - 100% waterproof and windproof
  - Waterproof seam sealed
  - Fully lined mesh and taffetta lined sleeves
  - Adjustable hem and cuffs
  - Adjustable tuck away hood



## Viking Torrent Jacket Style

- Key Features:**
- Custom made design
  - High-tech polyester/PVC shell fabric
  - 100% waterproof and windproof
  - Waterproof seam sealed
  - Adjustable cuffs
  - Adjustable hood with toggles



FIND US ON:



**Alliance Mercantile Inc.**

[www.vikingwear.com](http://www.vikingwear.com)

[www.alliancemerchantile.com](http://www.alliancemerchantile.com)

[www.boardroomclothing.com](http://www.boardroomclothing.com)

